

The Resort Collection | The Retreat at ChampionsGate

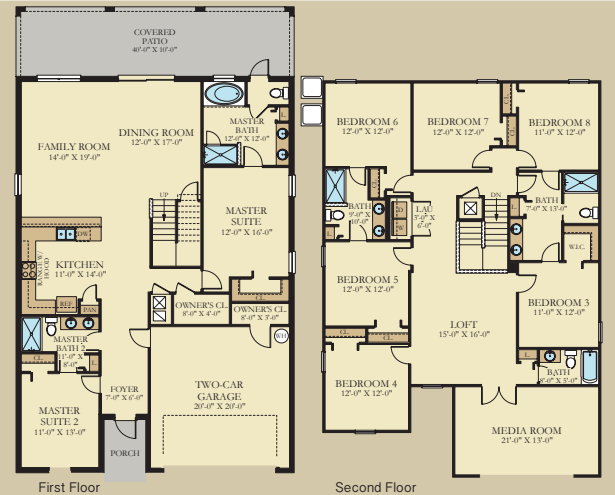
The Fiji

2 Story | 6 Bedroom | 6 Bath | 2 Car Garage
3,348 Sq. Ft. / 310 Sq. Meters Living Area



The Maui

2 Story | 8 Bedroom | 5 Bath | 2 Car Garage
3,812 Sq. Ft. / 355 Sq. Meters Living Area



The Alexander Palm

2 Story | 5 Bedroom | 5 Bath | 1 Car Garage
3,014 Sq. Ft. / 280 Sq. Meters Living Area



The Majesty Palm

2 Story | 6 Bedroom | 5 Bath | 1 Car Garage
3,275 Sq. Ft. / 304 Sq. Meters Living Area



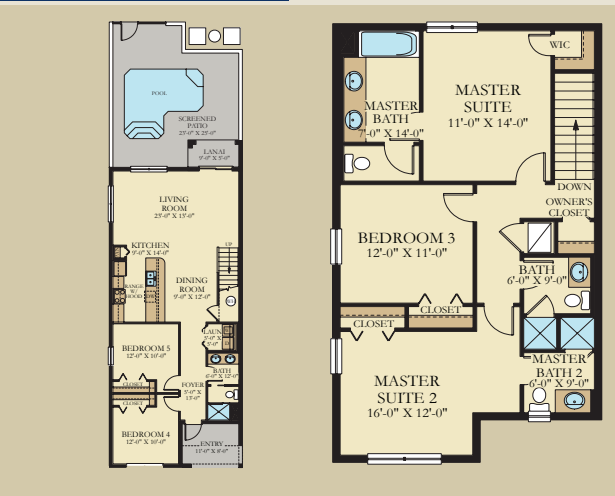
The Sabal Palm

2 Story | 4 Bedroom | 3 Bath
1,914 Sq. Ft. / 178 Sq. Meters Living Area



The Royale Palm

2 Story | 5 Bedroom | 4 Bath
2,128 Sq. Ft. / 197 Sq. Meters Living Area



Plans and elevations are artist's renderings and may contain options, which are not standard on all models. Lennar reserves the right to make changes to these floor plans, specifications, dimensions and elevations without prior notice. Stated dimensions and square footage are approximate and should not be used as representation of the home's precise or actual size. Any statement, verbal or written, regarding "under air" or "finished area" or any other description or modifier of the square footage size of any home is a shorthand description of the manner in which the square footage was estimated and should not be construed to indicate certainty.

For up-to-date pricing and availability call 407.506.7857 or email info@bferryhomes.com

The Resort Collection | The Retreat at ChampionsGate

New Home Sales Consultant: Brent Ferry | Global Real Estate Services, Inc. | 407.506.7857 | www.ChampionsGateFlorida.com

Vacation Townhomes



The Sabal Palm, The Beach Palm, and The Royale Palm

4 Bedroom | 3 Bath - 5 Bedroom | 4 Bath | 1,914 - 2,128 Sq. Ft. | 178 - 197 Sq. Meters Living Area | From the \$290s

Vacation Homes / Villas



The Alexander Palm

5 Bedroom | 5 Bath
3,014 Sq. Ft. | 280 Sq. Meters Living Area
40' | 12 m Lot
From the Upper \$300s

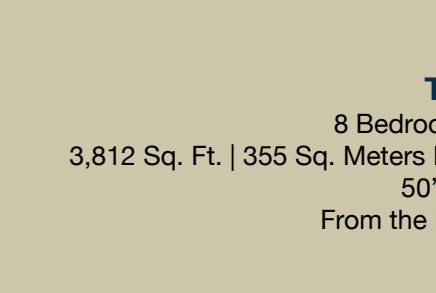
The Majesty Palm

6 Bedroom | 5 Bath
3,275 Sq. Ft. | 304 Sq. Meters Living Area
40' | 12 m Lot
From the Upper \$300s



The Fiji

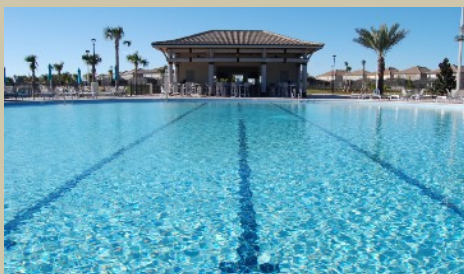
6 Bedroom | 6 Bath
3,348 Sq. Ft. | 310 Sq. Meters Living Area
50' | 15 m Lot
From the Upper \$400s



The Maui

8 Bedroom | 5 Bath
3,812 Sq. Ft. | 355 Sq. Meters Living Area
50' | 15 m Lot
From the Low \$500s





The Oasis Clubhouse at ChampionsGate

*Contact me
for a tour!*

Presented By: Brent Ferry • Global Real Estate Services, Inc. • 407.506.7857 • www.ChampionsGateFlorida.com



When you buy in The Retreat at ChampionsGate, you and your guests will gain access to the exclusive Oasis Club. This luxurious amenity center offers two pools, a lazy river, water slide, children's water play structure, rentable cabanas, poolside food and drink service, an outdoor tiki bar, plus a 16,000+ sq. ft. | 1,500 m² clubhouse with a restaurant, movie theater, fitness center, game room, and more.

